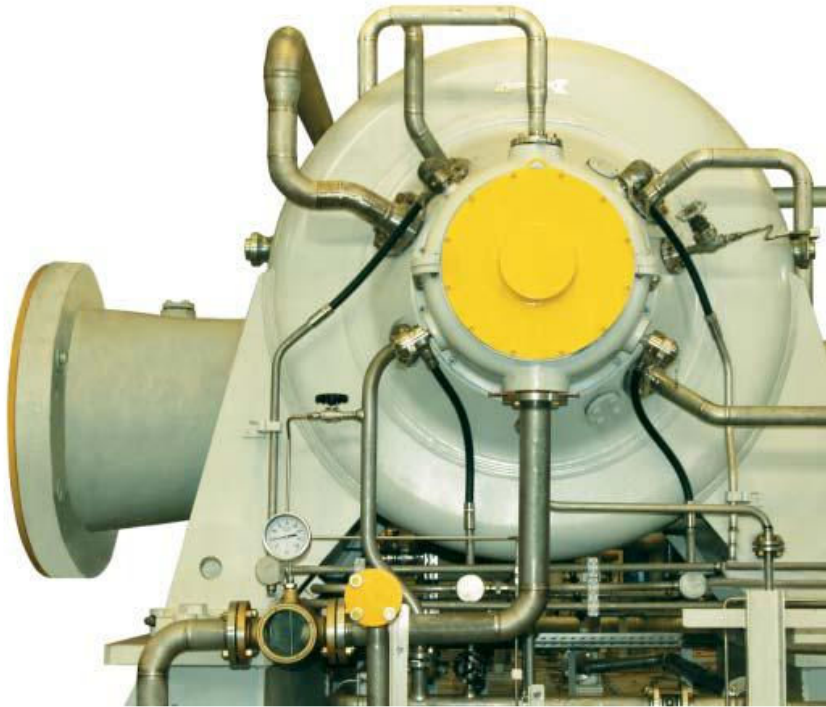




**RIABOVIL  
GAS COMPRESSOR  
COMPANY**

## Datasheet Riabovil GCC

RGCC-6Ct Centrifugal compressor



### Specifications:

**Continuous flow compressor**

**Flowrate:** 10,000 m<sup>3</sup> gas/ minute

**Drivers:** Steam turbines // Electric motor

Connect to 1000 or 1400 mm diameter pipelines

**Compressor range:** 120KM

**Costs estimated (per compressor):** € 5.150.000 (without personnel costs)

**Average lifespan:** 3,5 years.

If you have any questions about this product, please feel free to contact us at [Egor.Shumenko@riabovilgcc.com](mailto:Egor.Shumenko@riabovilgcc.com)  
an estimation of the time can be delivered on demand